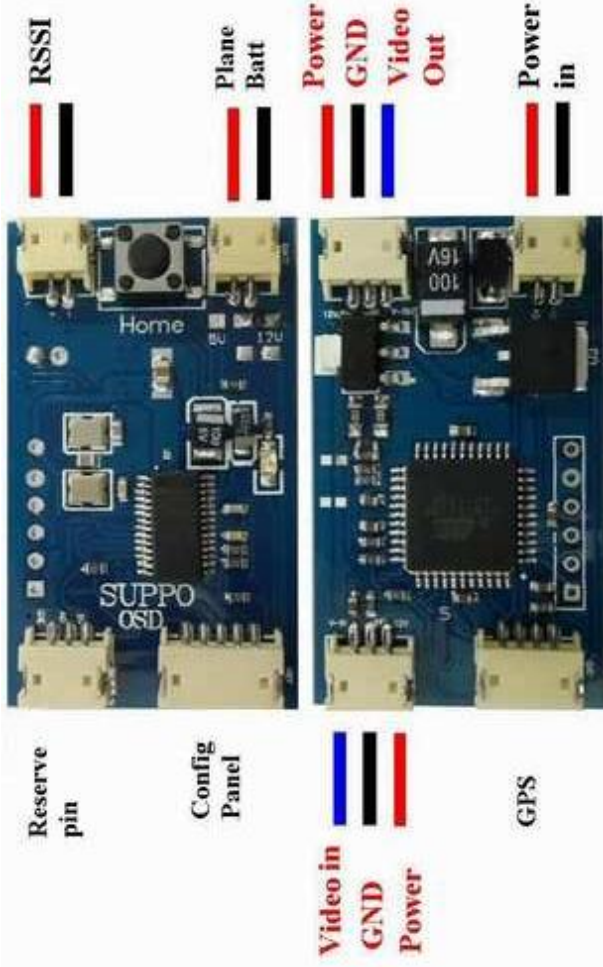


New feature: support distance unit in meter /km and feet/MI, speed at kmh / mph

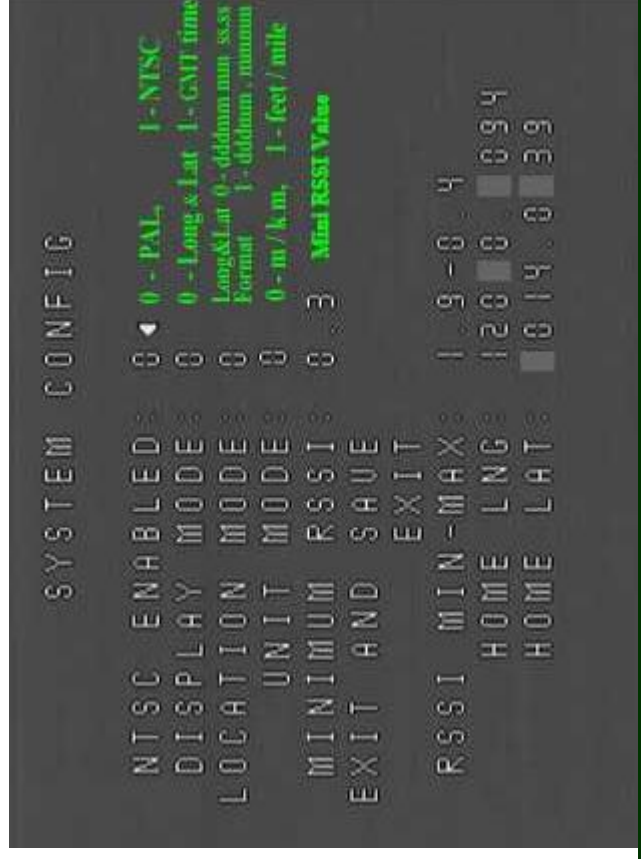
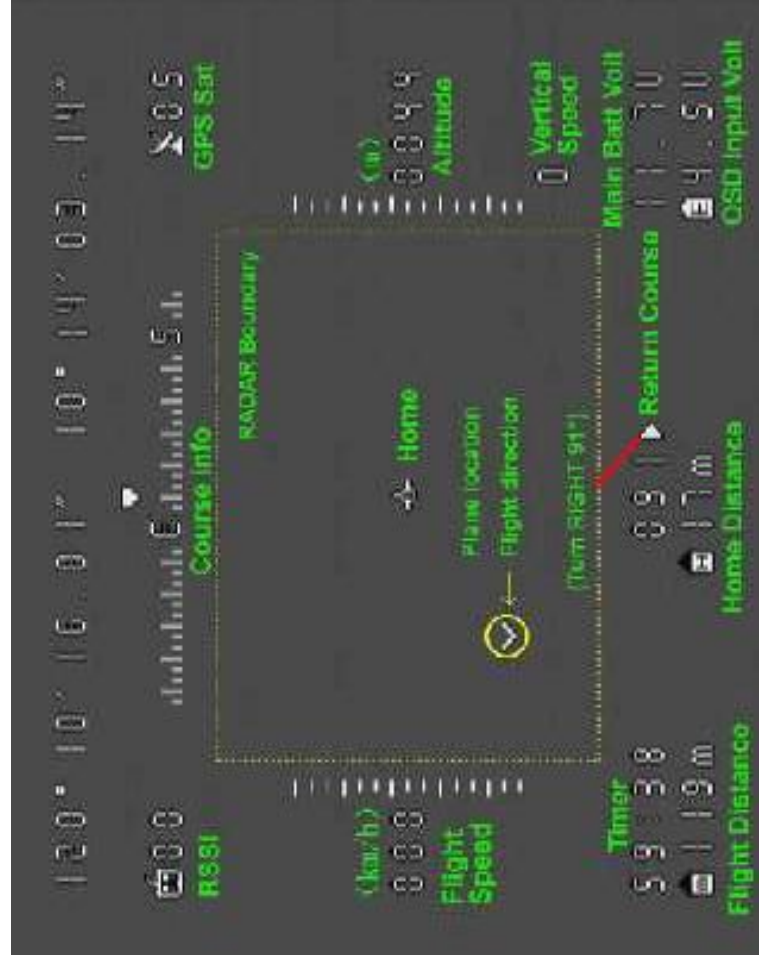


Connetion Pins

Connector's description	
Config panel	Connect to button panel
Power in	Connect to power source for your OSD (as Voltage 4.5V shown on left)
Video out	For the OSD video output
RSSI	Connect to your radio receiver's RSSI port
Main Batt (to RC plane's battery)	Connect to your airplane's battery pack (monitor plane's voltage Max 28V). As 11.7v shown on left)
GPS	Connect to GPS unit
Camera	Connect to your camera

Configuring OSD:

Press button "Menu" on "Config Panel" to enter system configuration
Use "Option SW" and "Select" button to configure



Setting RSSI Min – Max value:

1. On ground power up TX and RX, press “set home” button, OSD will record RSSI Max;
2. On ground, power off TX, press “Menu” button, OSD will record RSSI Min value.
3. Select Save and Exit to save RSSI Min Max value.

Notes:

GPS first start will take 1 minute. Re-start only 10 second.

Please note that you need to set “HOME” location (press home button) each time to get the right “Flight Distance” and “Home Distance”, and “Return Course”

Specifications:

	Input Volt	Weight	Size
OSD	7-12V *	10g	44*28*11mm
GPS	3.3V	10g	
Power consumption: Max: 1.1W Plane batt detect max 28V			

*When use voltage under 7V as power input, the voltage monitored will be in accurate. The OSD will still work under 7v. The other information on screen such as speed, distance etc. are correct but not the voltage info.

